



River Bank Analysis in the Vicinity of Sebatik Island and Its Influence to Determine Boundary of Indonesia-Malaysia

Ardiawan Jati ^{*1}, Danar Guruh Pratomo²

^{1,2}Institut Teknologi Sepuluh Nopember, Indonesia

Article Info	Abstrak
<p>Article History Dikirim 15 Januari 2020 Diterima 20 Juni 2020 Terbit 15 Januari 2021</p> <p>Keywords: Indonesia-Malaysia Boundary; 1915 Netherland-British Agreement; River bank; Border Line; Spatial Data</p>	<p>Sungai sebagai batas tercantum dalam Perjanjian Belanda-Inggris tahun 1915 dengan Peta Lampiran tanpa koordinat yang jelas. Ini merupakan kendala dalam melacak batas-batas di sungai karena yang mana sungai itu dinamis, perubahan bentuk dan tepi sungai dapat terjadi dalam kurun waktu lebih dari 100 tahun. Citra satelit Landsat multi-temporal yang diproses dengan kombinasi band (color composite) digunakan untuk mengamati posisi tepi sungai dari tahun 1989 hingga 2019 dengan interpretasi visual dan digitalisasi manual. Hasilnya, selama 30 tahun terjadi pergeseran di tepi sungai Sikapal dengan rata-rata 11,4 m di sisi kanan (Indonesia) dan 15 m di sisi kiri (Malaysia). Pergeseran rata-rata tepi sungai Tamboe adalah sisi kanan 25,1 m dan di sisi kiri 8,8 m. Pergeseran ini relatif kecil karena di sekitar sungai Sikapal dan Tamboe banyak ditumbuhi oleh hutan bakau yang dapat memperlambat laju erosi. Tepi sungai pada tahun 1989, 1999, 2009 dan 2019 digunakan sebagai dasar penentuan batas Indonesia-Malaysia menggunakan pendekatan tiga tahap. Hasilnya, ada perbedaan dalam bentuk garis batas meskipun kecil. Namun, wilayah sungai Indonesia dan Malaysia masih memiliki rasio proporsional 1: 1,03 pada tahun 1989, 1999, 2009 dan 2019. Meskipun rasio tersebut sama, luas sungai telah meningkat sebesar 0,08-0,11 km².</p>

Abstract

River as the boundary is listed in the 1915 Netherland-British Agreement with its Annex Map without any clear coordinates. This is an obstacle in tracing boundaries in the real river because where river is dynamic, changes in the river shape and river bank can occur in more than 100 years. Multi-temporal Landsat satellite imagery processed with a combination of bands (color composite) is used to observe the position of the river bank from 1989 to 2019 with visual interpretation and manual digitization. As a result, over 30 years there was a shift in the Sikapal river bank with an average of 11.4 m on the right side (Indonesia) and 15 m on the left side (Malaysia). The average shift of the Tamboe river bank is the right side 25.1 m and on the left side 8.8 m. The shift is relatively small because around the Sikapal and Tamboe rivers banks are overgrown by mangrove forests which can slow down the rate of erosion. River banks in 1989, 1999, 2009 and 2019 were used as a basis for delimitation of the Indonesia-Malaysia boundary using a three-stage approach. As a result, there are differences in the shape of the boundary line although it is small. However, the river area of Indonesia and Malaysia still has a proportional ratio of 1: 1.03 in 1989, 1999, 2009 and 2019. Although the ratio is the same, the area of the river has increased by 0.08-0.11 km².

* E-mail : ardawan.jati@gmail.com
 Address :

INTRODUCTION

The river is a drainage channel that is formed naturally. The existence of flowing water causes river bank to be eroded throughout its existence [1]. River is one of the natural features that is commonly used as a border. Tamboe River and Sikapal River in Nunukan and Tawau regions are the borders of Indonesia and Malaysia. Even though it's a river, it's a land boundary, not a maritime boundary. The evidence which states that it is the boundary of Indonesia and Malaysia is The Boundary Agreement between Netherlands and British signed in London, September 28, 1915.

The Indonesian and Malaysian Land Boundaries have not yet been fully completed, although basically Indonesia and Malaysia agreed to follow principle of *utis posidetiis juris* which means border is inherited from the colonial [2]. The agreement explains description of the boundary between Netherlands and British from West Pillar on Sebatik Island to Bukit Sikapal (AA2 Pillar). The agreement is accompanied by an annex map but information of datum and coordinate system used and list of coordinates of the border are not written.

Datum information, coordinate system and list of boundary coordinates that are not written become obstacles in redrawing the boundaries on the current map. Actually the description of boundary in the agreement can be used as a reference to redraw border line, but there is no guarantee that river between West Pillar to AA2 Pillar is still exactly same condition when the Netherland-British agreement was made.

River change can affect shape of border line. It has been more than 100 years since the agreement was made until now. River is very likely to change due to the effects of erosion. Erosion is a form of soil damage as a result of loss of topsoil layers [3]. Erosion is definitely possible and zero erosion is not possible [4]. River bank monitoring can be done with digital imagery. Digital imagery is a picture of the earth surface as seen from space (satellite) or from the air (airplanes) [5].

Another research on river bank change due to erosion has been conducted in the southern Mekong River. It used optical satellite imagery to observe changes in river banks from 1973 to 2008. River banks of Mekong were eroded along the left and right. The erosion phenomenon occurs strongly in Sa Dec District at a rate of 33m per year [6]. Likewise research conducted in Manu River, Bangladesh for a period of thirteen years (1997-2010). Using Landsat satellite imagery, they get very high river bank shifts on the left and right respectively 656m and 628m [7].

In line with previous research, this research aims to monitor river shape and river bank in spatial terms with multi-temporal satellite imagery data for 30 years to obtain results of a river shapes and river bank comparison. River bank for 30 years was used to draw Indonesia-Malaysia border line. Analysis of 30-year difference in border line is the final product of this study.

METHOD

The data used are 1915 Netherland-British Agreement regarding boundary of British (in Malaysia) and Netherland (in Indonesia) and Annex Maps with a scale of 1: 250,000, Topography Map with a scale of 1: 50,000, Nautical Chart (Mening Island to Ligitan Island) with a scale of 1: 200,000 and multi-temporal landsat satellite imagery in 1989, 1999, 2009 and 2019, detail are shown in table 1.

Table 2. List of Remote Sensing Data

No.	Area	Date	Satellite
1	Nunukan - Tawau	21 Sept 1989	Landsat 5 TM
2	Nunukan - Tawau	30 Dec 1999	Landsat 7 ETM
3	Nunukan - Tawau	30 Oct 2009	Landsat 5 TM
4	Nunukan - Tawau	29 Dec 2019	Landsat 8 OLI

Scope of area focuses on rivers and waters west of Sebatik Island to AA2 pillars along 20.6 km which are divided into 9.6 km of rivers with 120-500 meters width and 11 km of water with widths reaching 3 km. The location is border of Indonesia in Nunukan, North Kalimantan with Malaysia in Tawau, Sabah. The location is shown in Figure 1.

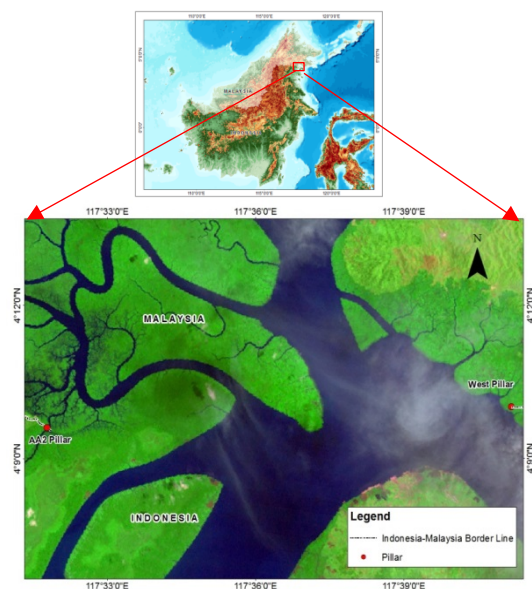


Figure 1. Border Area : Nunukan (Indonesia) – Tawau (Malaysia)

This research requires several steps, starting from data compilation, datum and coordinate system transformation, geometric correction, digitizing until border line delimitation. Data Processing Flow Chart is shown in figure 2.

Landsat satellite imagery has WGS84 datum and geographic coordinate system, topographic map has DGN95 datum and UTM projection coordinate system, Nautical Chart has WGS84 datum and merkator projection coordinate system, whereas Annex Map of 1915 Netherland-British Agreement has Bessel 1841 datum and astronomical coordinate system . All data is transformed into same datum and coordinate system, namely WGS84 datum and UTM Projection coordinate system with GIS software.

Transformation from Bessel 1841 datum and astronomical coordinates to WGS84 datum and UTM projections coordinates are done by calculating vertical deflection component. Global Geoid models are used for calculation of the vertical deflection component is the Earth Gravitational Model (EGM) in 2008 with components obtained from the NASA / GSFC site (2014) [8]. There are four tie points used to register map in WGS 84, UTM projection which is shown with its vertical deflection in table 2.

Colour composite aims to combine bands in satellite imagery to produce certain colours that make it easy to identify objects, river banks in this case. A suitable colour composite used to distinguish land and water is combination of band 7, band 4 and band 2 for red, green and blue (RGB) that apply to Landsat TM imagery in 1989, 2009 and Landsat ETM imagery in 1999. Whereas Landsat 8 OLI 2019 applies combination of RGB is band 7, band 5 and band 3.

Geometric correction is done on Landsat TM and ETM satellite imagery which refers to position of object in Landsat 8 OLI. Geometric correction aims to register satellite imagery by placing the pixel position on the satellite imagery based on the base map so that the position of the objects in the satellite image matches with actual position in the field. Method often used is Root Mean Square Error (RMSE) where the tolerance is £ 1 pixel [9].

$$RMSE = \left(\sum_{i=1}^{i=n} (x_i - x_i')^2 / n \right)^{1/2} \dots\dots\dots(1)$$

where x_i is the observed value, x_i' is the modelled value, and n is the number of elements.

Cropping satellite imagery is done to focus area of interest and reduce data size. Digitizing ri-

ver banks is carried out on landsat imagery in 1989, 1999, 2009 and 2019 by first interpreting imagery then identifying objects manually [10].

Digitization of coastline is carried out on Nautical Chart by observing aspect of accuracy with the rule that digitization is done at twice zooming of map scale that be produced [11]. Digitization of river banks and coastlines is also carried out on an Annex Map of 1915 Netherland-British Agreement. The results of digitization are vector formats. Overlay vector river bank in 1915, 1989, 1999, 2009 and 2019, whether there were changes and how big the changes are. Next, analyze the results.

In another stage, interpretation of boundary descriptions in 1915 Netherland-British Agreement to be depicted on satellite imagery. There are two boundary segments from West Pillar to the AA2 Pillar shown in figure 3. Segment one is from West Pillar to the mouth of Tamboe River. Segment two starts from the mouth of Tamboe River to watershed Bukit Sikapal (AA2 Pillar).

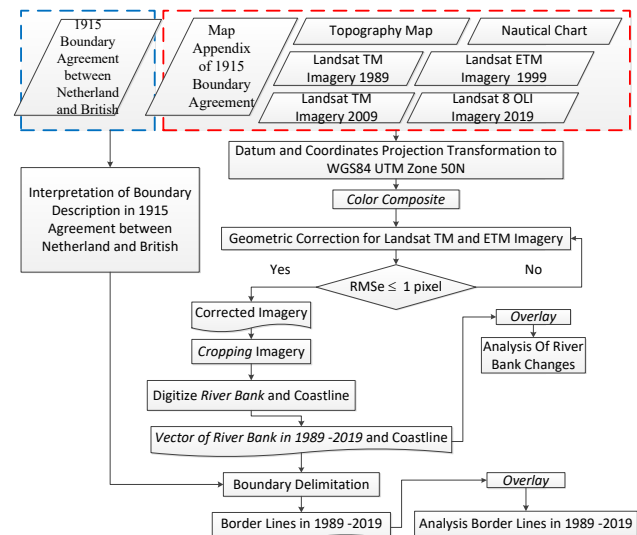


Figure 2. Data Processing Flow Chart

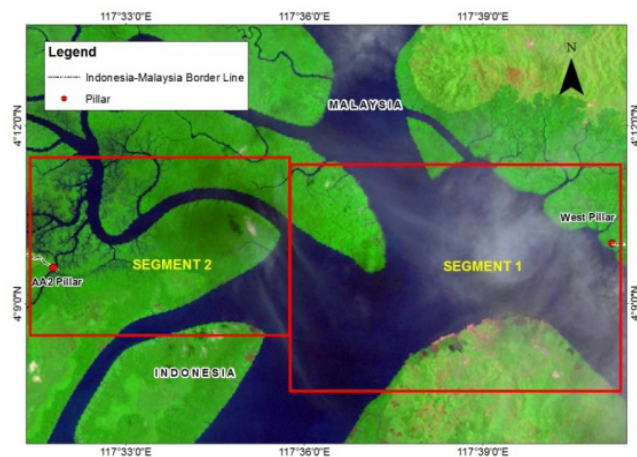


Figure 3. Segment of Boundary

Table 2. Results of Coordinates Transformation of the 1915 Netherland-British Agreement Map

No.	Astronomis Coordinates, Bessel 1841 Datum						Vertical Deflection		WGS84 Datum								
	F			L			h	x	j			l			N	E	
	°	′	″	°	′	″			°	′	″	°	′	″			m
1	4	40	0	115	40	0	2.598	13.852	4	40	5.98	115	40	13.85	516864.77	352471.90	
2	3	40	0	115	40	0	-6.986	-2.375	3	39	43.89	115	39	57.62	405538.55	351729.82	
3	3	40	0	118	0	0	-4.894	-1.181	3	39	49.59	117	59	58.81	405649.32	610905.19	
4	4	40	0	118	0	0	-2.928	2.121	4	39	53.77	118	0	2.12	516328.18	610868.25	

Delimitation of boundary is done by three stage approach method [12], which is first to construct median line. To get a Median line, it is determined using the equidistance line method. Equidistance line is obtained from the circle which is drawn in contact with river bank or coastline of two countries where the principle of the circle is to have the same length of radius from the outermost to the centre of circle[13]. Second, by considering relevant circumstances. Relevant circumstances are islands and coastlines. Third is the disproportionality test. Disproportionality test is done by comparing length of coastline and area obtained between two countries to get coastline and area that is relevant for both countries. Indonesia-Malaysia border line is drawn on satellite imagery in 1989, 1999, 2009 and 2019 which incidentally has different river banks so that different border lines are also generated. Border lines are compared and then analyzed.

RESULTS AND DISCUSSION

Geometric Correction

The results of geometric corrections on Landsat satellite imagery in 1989, 1999 and 2009 with 8 control points that spread on the image scene (figure 4) respectively were 0.82, 0.61, and 0.84.



Figure 4. Distribution of Control Points in 1989

Based on the results, it can be concluded that Landsat Satellite Imagery in 1989, 1999 and 2009 have geometric accuracy with RMSe less than equal to one pixel.

Riverbank Monitoring

The results of river bank monitoring for 30 years from 1989 to 2019 which were divided into two areas, namely Tamboe River and Sikapal River, showed that differences in river banks from 1989 to 2019 were hardly visible visually (scale dependent). That means trend of changes in river banks from 1989 to 2019 is quite small.

In this research several samples were taken along Tamboe River and Sikapal River to get data of the river bank shift in left and right shown in figure 5. The value of river bank shift is shown in table 3 with the statistics in table 4. The value of the shift is expressed in graphic on the figure 6.

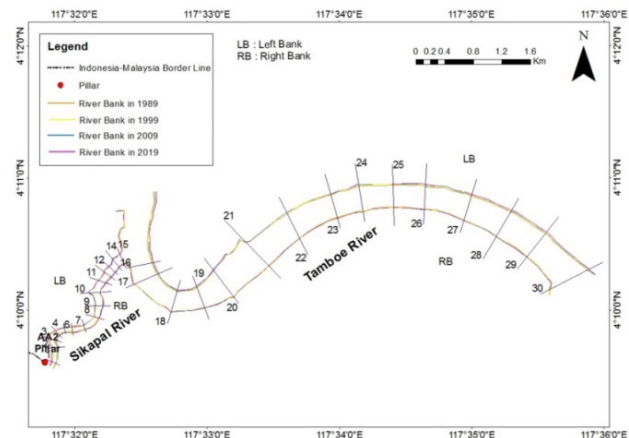


Figure 5. River Bank Shifting

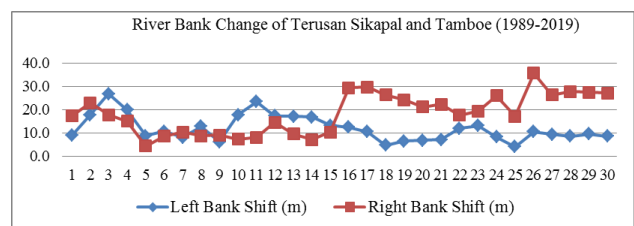


Figure 6. Graphic of River Bank Shifting from 1989-2019

Table 3. River Bank Shifting from 1989-2019

No.	Left Bank Shift (m)	Direction	Right Bank Shift (m)	Direction
1	8.9	left	17.2	right
2	17.7	left	22.8	right
3	26.8	left	17.6	right
4	19.8	left	15	right
5	8.7	left	4.4	right
6	10.6	left	8.6	right
7	8	left	10.3	right
8	12.7	left	8.7	right
9	6.2	left	9	right
10	17.8	left	7.2	right
11	23.4	left	8	right
12	17.3	left	14.5	right
13	17.1	left	9.5	right
14	16.7	left	7	right
15	13.3	left	10.4	right
16	12.4	left	29.2	right
17	10.5	left	29.6	right
18	4.7	left	26.3	right
19	6.5	left	24.2	right
20	6.8	left	21.1	right
21	7.2	left	22.3	right
22	11.9	left	17.6	right
23	13	left	19.3	right
24	8.3	left	25.9	right
25	4.1	left	17.1	right
26	10.4	left	35.5	right
27	9.3	left	26.2	right
28	8.5	left	27.7	right
29	9.6	left	27.4	right
30	8.5	left	27	right

by 0.29 m on the left side and 0.84 m on the right side. Shifting of river banks are generally affected by erosion.

Table 4. Statistic of River Bank Shifting from 1989-2019

Remark	Sikapal River		Tamboe River	
	Left	Right	Left	Right
Number of samples	15	15	15	15
Min. shifting	6.2 m	4.4 m	4.1 m	17.1 m
Max. shifting	26.8 m	22.8 m	13 m	35.5 m
Average Shifting along River	15 m	11.4 m	8.8 m	25.1 m

Maximum shifting of the river bank annually is also calculated for the Sikapal River by 0.89 m on the left side and 0.76 m on the right side. Whereas along Sikapal River, maximum river bank shifting each year is 0.43 m on the left side and 1.18 m on the right side. Maximum shifting is in the river curvature which is an erosion-prone area due to the strong influence of water discharge which has a direct impact on the river curvature [14].

From description above, it can be concluded that river bank change in Tamboe River and Sikapal River over the 30 year observation period is small. Some factors that influence this are:

1. River. Mangroves resist abrasion by seawater and rivers where several locations of mangroves are shown in figure 7.
2. Although for 30 years there have been some changes in forest into agricultural around the Tamboe River but the distance from the river is quite far about 80-100 meters so that mangroves around the river still exist.
3. Gradient / slope of Tamboe and Sikapal rivers are high so the erosion level is low.

Based on table 3, it can be determined that shifting of river banks of Tamboe and Sikapal rivers each year. Shifting average of river bank each year along Sikapal River is 0.5 m on the left side and 0.38 m on the right side. Whereas along Tamboe River, shifting average of river bank each year

Analysis of River Bank on Annex Map of The 1915 Netherland-British Agreement

From overlay results in figure 8, it can be seen that general form of rivers and coastlines in the Annex Map of the 1915 Netherland-British Ag-



Figure 7. Mangroves Around the River [15]

reement almost the same to general shape of rivers and coastlines on satellite imagery and Nautical Chart. However, the position of object is not accurate (shown in table 5). In addition, Sikapal River is not described in detail on the agreement map.

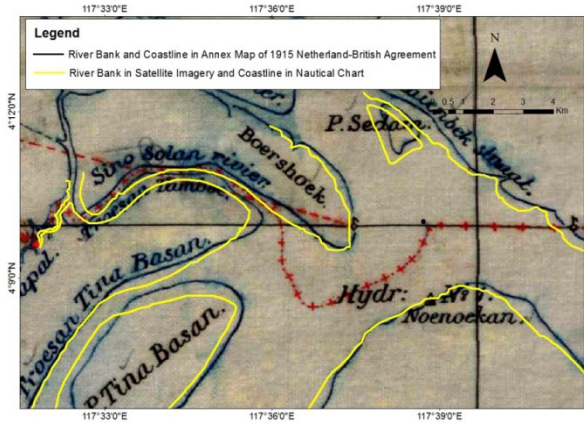


Figure 8. River Bank and Coastline Overlay of the 1915 Netherland-British Agreement with Landsat Imagery and Nautical Chart

The difference in position is not caused by significant change of river, but is caused by:

1. The map of Netherland-British Agreement 28 September 1915 is a small scale map that is 1: 250,000 which 1 mm error on the map is equal to 250 meters in the field.
2. The map of Netherland-British Agreement 28 September 1915 was made with low accuracy because of the technology at the time.
3. The registration process is not perfect because tie points are limited to four points.

Table 5. Differences in Position of the Objects on Annex Map of the 1915 Netherland-British Agreement with Satellite Imagery and Nautical Chart

No.	Object	Difference in position (m)
1	Estuary End of Tamboe River	491
2	North End of Tinabasan Island	448
3	South End of Sedam Island	456
4	Estuary End of Sikapal River	384
5	North of Nunukan Island	226
6	West End of Sebatik Island	498

From table 5, it can be concluded that river banks and coastlines on the Annex Map of the 1915 Netherland-British Agreement cannot be used as a base map for delimiting boundaries because position of river banks and coastlines is very different both when compared with satellite imagery and Nautical Chart.

Border Line Delimitation

Constructing Equidistance Line

For segment 1, basic data used is the coastline that has been digitized from the Nautical Chart. Starting from the boundary pillar on the west coast of the island of Sebatik, the boundary follows the parallel of 4°10' north latitude westward until it reaches the middle of the river, thence keeping a mid-channel course until reaches the middle of the mouth of Tamboe River. West Pillar which has been repositioned in parallel 4010 ' Geographical North Latitude with WGS 84 datum [16]. The border lines and construction are shown in figure 9.

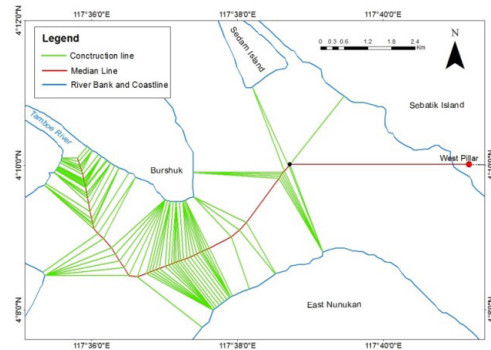


Figure 9. Median line and Construction line in segment 1

For segment 2, basic data used is the river bank that has been digitized from multi-temporal satellite imagery so that later there will be several boundary versions based on satellite imagery years, 1989, 1999, 2009 and 2019. From the mouth of Tamboe the boundary line is continued up the middle of this river until it is intersected by a similar line running through the middle of Sikapal River; it then follows this line through Sikapal River as far as the point where the latter meets the watershed between the Sikapal hill (AA2 Pillar) and is connected finally with this watershed by a line taken perpendicular to the centre line of Sikapal River. The boundary lines and construction are shown in figure 10.

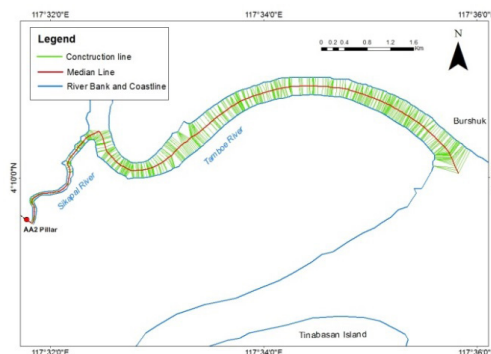


Figure 10. Median line and Construction line in Segment 2

Considering Relevant Circumstances

In this case there is Sedam Island, when viewed from the map of the Netherland-British Agreement in 1915 that the island has been drawn and until now the island still exists so the island is an influential factor. In addition, the length of the relevant coastline is also influential as shown in figure 11.

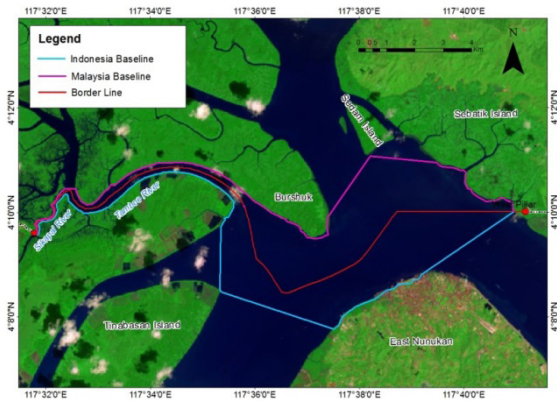


Figure 11. Relevant Coastline of Indonesia and Malaysia

Disproportionality Test

Disproportionality test is done by comparing the length of the coastline and the area obtained between two countries to get the coastline and the area that is relevant for both countries. The disproportionality test results are listed in table 6.

Table 6. Disproportionality Test Results

Years	Comparison			
	Relevant Coastline		Relevant Area (km ²)	
	Indonesia	Malaysia	Indonesia	Malaysia
1989	24.66	22.58	18.44	18.63
	1.09	1	1	1.01
1999	24.64	22.56	18.49	18.68
	1.09	1	1	1.01
2009	24.64	22.58	18.53	18.72
	1.09	1	1	1.01
2019	24.60	22.58	18.57	18.77
	1.09	1	1	1.01

Table 6 shows that Indonesia’s relevant coastline is longer than Malaysia’s relevant coastline in all years. Even so, the average length comparison of Indonesian and Malaysian relevant coastlines is 1.09: 1 in all years.

Unlike the length of the coastline, Indonesia’s relevant area is smaller than Malaysia’s relevant area. This means that in the median line for delimitating boundaries, the longer coastline does not

mean the bigger area. The relevant area of Indonesia is smaller than the relevant area of Malaysia. The average ratio of relevant areas between Indonesia and Malaysia is 1: 1.01 in all years.

Same ratio at the relevant coastline length and relevant area due to differences in each are not significant. Therefore, median line drawn from data in 1989, 1999, 2009 and 2019 has suitable disproportionality test in producing equitable solution for border line between two countries.

Comparative Analysis of Indonesian and Malaysian Boundaries Based on Basic Data Used

From the process of delimitating median line in segment 2, different median line is obtained from the baseline data in 1989, 1999, 2009 and 2019. That is because constructing of median lines is influenced by different river banks. Then Median lines area overlaid by each other.

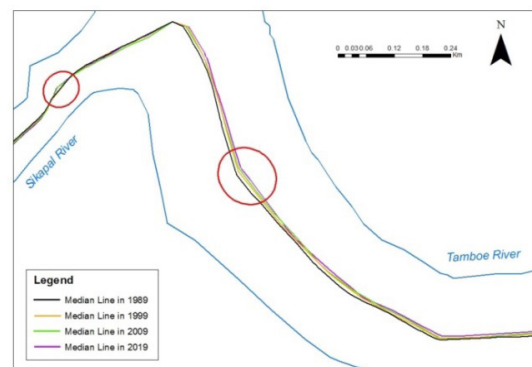


Figure 12. Median line Difference in 1989, 1999, 2009 and 2019

In the westward curve of Tamboe River, the difference is in the 1989 Median line with the 2019 Median line where the 1989 Median line is more west than the 2019 Median line. Assuming the median line is Indonesia-Malaysia boundary line and the river bank used is the most recent (2019) so if using the 1989 Median line, Indonesian river area is smaller than Indonesian river area using the 2019 Median line. Whereas Malaysian river area is bigger using the 1989 Median line than the 2019 Median line is shown in figure 12.

The second difference is in the curve of the Sikapal River close to the estuary. The 2009 Median line looks more west than the other year median lines. This means that the Malaysian river area in 2009 is smaller than 1989, 1999 and 2009 but instead for the Indonesian river area.

Differences in some parts of median line cause differences in river area of both for Indonesia and Malaysia. The difference in segment 1 + segment 2 has been shown in table 6 on the disproportionality test results. When divided per segment,

Table 7. River Area Comparison of Indonesia and Malaysia in Segment 2

Years	River Area (km ²)		Area Increasing of The River (km ²)		Area Comparison	
	Indonesia	Malaysia	Indonesia	Malaysia	Indonesia	Malaysia
1989	1.40	1.44	-	-	1	1.03
1999	1.45	1.50	0.05	0.06	1	1.03
2009	1.49	1.54	0.04	0.04	1	1.03
2019	1.53	1.58	0.04	0.04	1	1.03

segment 1 uses only one type of data namely Nautical Chart so that there is only one version of Median line whereas segment 2 uses some basic data so as to produce several versions of the river area shown in table 7.

Table 7 shows how different median lines in those years have affected the river area. The largest increasing of river area in 10 years is 0.05 km² for Indonesia and 0.06 km² for Malaysia, which is only 3.4% to 3.9% of the river area. The difference of area increasing of the river in Indonesia and Malaysia tends to be small. Therefore, the ratio of river area between Indonesia and Malaysia is same, which is 1: 1.03.

It has been previously analyzed that Annex Map of the 1915 Netherland-British Agreement cannot be used as a basic map to delimitate boundaries

because of error position. However, the results of river area analysis for 30 years (intervals every 10 years) explain that the ratio of river area as the boundary of Indonesia and Malaysia is always same at 1: 1.03 which means increasing of river area is evenly distributed on the right side (Indonesia) and on the left side (Malaysia). Therefore, despite unavailability of spatial data showing the position of the river bank in 1915, it can be assumed that if median line is drawn on the river bank conditions at that time, then the river area of Indonesia and Malaysia will be calculated, then the area ratio will be the same.

It was concluded that what Netherland and British had agreed in 1915 for the river was proportional to the current conditions so that there was no concern of major changes in the boundary which was beneficial to either Indonesia or Malaysia.

CONCLUSION

The maximum river bank shift over the past 30 years occurred in the river curves is 26.8 m on the left side of Sikapal River and 35.5 m on the right side of the Tamboe River. River banks shifting of Sikapal River and Tamboe River are relatively small with a maximum shift is 0.43 m to 1.18 m per year. This is because many mangroves grow around the river bank of the Sikapal River and Tamboe River which can hold back rate of erosion. The diffe-

rence in the median line as border line affects Indonesian and Malaysian river areas. However, the difference is small, only 3.4% to 3.9% of the river area, so that the ratio of river areas of Indonesia and Malaysia is still same 1: 1.03 in 1989 to 2019. It can be concluded that rivers area of Indonesia and Malaysia when the 1915 of Netherland-British Agreement was proportional to the latest data in 2019.

ACKNOWLEDGMENTS

We thank to the Geospatial Information Agency for support this research data and Saintek Program from Ministry of Research and Technology for funded this research, for all the Researchers involved in it and also our deep appreciation to the reviewers of this paper.

REFERENCES

- Sosrodarsono, Suyono. (1983). *Hidrologi untuk Pengairan*. Pradnya Paramita, Jakarta.
- Jones, S. B. (1945). *Boundary Making; A Handbook for Statesmen, Treaty Editors, and Boundary Commissioners*. William S. Hein & Co., Inc., Buffalo, New York.
- Arsyad. (2006). *Konservasi Tanah dan Air*. Bandung
- Frevert, et. al. (1950). *Soil and Water Conservation Engineering*. John Wiley & Sons, Inc. New York.
- Prahasta, E. (2008). *Remote Sensing Praktis Penginderaan Jauh & Pengolahan Citra Digital dengan Perangkat Lunak ER Mapper*. Informatika. Bandung.
- Ngyuyen, L.D. et. al. (2010). "Analysis Of Changes In The River banks Of Mekong River-Vietnam By Using Multi-temporal Remote Sensing Data". International Archives of the Photogrammetry, Remote Sensing and Spatial Information Science, Volume XXXVIII, Part 8, Kyoto, Japan, 2010
- Dabojani, D. Mithun, D. Kanti, K.K. (2013). "River Change Detection and Bankline Erosion Recognition using Remote Sensing and GIS". Forum geografic. Volume XIII, Issue 1 (June 2014), pp. 12-17
- Hadi, S., Abidin, H.Z., Priyatna, K. (2015). "On Reliability of the Annex Map of the 1915 Land Boundary Treaty between Indonesia and Malaysia". FIG Working Week 2015 From the Wisdom of the Ages to the Challenges of the Modern World Sofia, Bulgaria, 17-21 May 2015
- Sukojo, B. M. (2012). *Penginderaan Jauh (Dasar Teori & Terapan)*. ITS-Press. Surabaya.
- Lillesand, T.M., Kiefer R.W., dan Chipman J.W. (2004). *Remote Sensing And Image Interpretation*. Fifth Edition. New York : John Wiley & Sons.
- Badan Informasi Geospasial. (2016). *Digitasi Unsur Peta Dasar Validasi Peta Rencana Tata Ruang*. Sekertariat BIG. Cibinong.
- International Court of Justice. (2009). *Maritime Delimitation in*

- The Black Sea (Romania V. Ukraine)*. The Hague: International Court of Justice.
- Arsana I. M. A. (2007). *Batas Maritim antar Negara*. Gadjah Mada University Press, Yogyakarta.
- Aher, S.P. et. al. (2012). "River Change Detection and Bank Erosion Identification using Topographical and Remote Sensing Data". *International Journal of Applied Information Systems (IJ AIS)* – ISSN : 2249-0868. Foundation of Computer Science FCS, New York, USA. Volume 2– No.3, May 2012 – www.ijais.org
- Nurdin, Amin. (2015). *Penentuan Opsi Garis Batas Negara Antara Indonesia dan Malaysia di Pantai Barat Pulau Sebatik, Terusan Tamboe dan Terusan Sikapal*. Tesis Magister Teknik Geodesi dan Geomatika. Institut Teknologi Bandung. Bandung.
- Badan Informasi Geospasial. (2019). *Laporan Perundingan Common Border Datum Reference Frame (CBDRF) Indonesia-Malaysia Tahun 2019*. Pusat Pemetaan Batas Wilayah. Bogor.