

Candida Species Distribution of Clinical Specimens in Banda Aceh, Indonesia

Suhartono Suhartono^{1*}, Wilda Mahdani², Aderiana Masthura¹, Iman Rusmana³

¹Department of Biology, Faculty of Mathematics and Natural Sciences, Universitas Syiah Kuala, Indonesia

²Microbiology Departement of Medical Faculty, Universitas Syiah Kuala, Indonesia.

³Departement of Biology, Faculty of Mathematics and Natural Sciences, IPB University, Indonesia.

*Email: suhartono@unsyiah.ac.id

Submitted: 15 March 2020. Revised: 23 May 2020. Accepted: 7 July 2020

Abstract. Candidiasis has become increasingly widespread in the community alongside with the developing resistance of *Candida* sp. to some antifungals. A prevalence study in the present research is required to surveil the distribution of *Candida*-related infections to administrate the appropriate antifungal treatments. The objective of this research was to determine the species distribution of candidiasis with their antifungal susceptibility isolated from clinical specimens at the Zainoel Abidin Hospital (ZAH) Banda Aceh, Indonesia. The clinical specimens were from inpatients and outpatients in the hospital during January to June 2019. The identification of *Candida* species and antifungal sensitivity assay were conducted by using VITEK[®] 2 Compact. Of a total of 68 isolates, there were six species of *Candida* with the highest species prevalence was *Candida tropicalis* (52.94%). Additionally, the highest prevalence of candidiasis came from urine specimen (54.41%) and mostly from inpatients in the internal medicine unit (54.41%). Candidiasis occurred predominantly in men (58.82%) and during adulthood (55.88%). The antibiogram of *Candida* sp. shows a high percentage of sensitivity towards some antifungals including fluconazole (100%), voriconazole (100%), caspofungin (100%), micafungin (100%), amphotericin B (99.5%), and flucytosine (100%). From this result, it can be concluded that candidiasis cases in the ZAH Banda Aceh, Indonesia has prevalently occurred with the few antifungal therapies for candidiasis of were still effective empirically and definitively. This is an initial study of *Candida* prevalence within different clinical samples in Banda Aceh and the study is expected to be a basis for prevention and control of *Candida*-related infections in the area.

Key words: Candidiasis; Fungal Susceptibility; Species Distribution

How to Cite: Suhartono, S., Mahdani, W., Masthura, A., & Rusmana, I. (2020). *Candida* Species Distribution of Clinical Specimens in Banda Aceh, Indonesia. *Biosaintifika: Journal of Biology & Biology Education*, 12 (2), 262-267

DOI: <http://dx.doi.org/10.15294/biosaintifika.v12i2.23758>

INTRODUCTION

Candidiasis is still a major concern due to its increasing rate of infections ranging from superficially topical infections (Frías-De-León et al., 2019) to serious systemic infections (Mavor et al., 2005) in community as well as hospital settings. The infection mainly caused by opportunistic fungal species of *Candida* sp. which are normally parts of microflora in human gastrointestinal, urogenital, and skins (Martins et al., 2014). Depending on the environmental conditions, the fungal pathogen is able to reversibly switch between two morphological forms as yeast-like form or filamentous form (pseudohyphae) contributing to the major virulence of the pathogen, including by means of biofilm formation (Tsui et al., 2016). Candidiasis predominantly affects individuals who have compromised immune status after administration of immunosuppressant drugs for the patients requiring organ transplantation or suffering from cancer (Sanguinetti et al., 2015; Karasuno et al., 2019).

The most primary prescribed antifungal drugs to treat candidiasis, including in the Zainoel Abidin Hospital (ZAH) is from the groups of azoles, predominantly as fluconazole. This antifungal inhibits ergos-

terol biosynthesis, a major component of fungal cell wall, by blocking 14 α -demethylase (Erg11p or Cyp51p), leading to ergosterol depletion and decreasing membrane rigidity as well as increasing drug uptakes (Sorgo et al., 2011). The intensive use of antifungal drugs including fluconazole might lead the fungal pathogen to develop its resistance (Berkow & Lockhart, 2017; Deorukhkar & Roushani, 2017). A study of prevalence, i.e. number of particular infections occurring in the particular times within population, is essential to determine appropriate treatments, including antifungal administration. Hence, the study for determination of fungal pathogens causing particular infection as well as their sensitivity towards antifungal is required to ensure the appropriate treatments in terms of types and dose of antifungals.

During June-July 2018, there was an emerging detection on *Candida* sp. from the clinical specimens in the ZAH. The prevalence and antifungal susceptibility of the *Candida* infections at the ZAH, however, is limited. Therefore, the objectives of the paper were to determine the species distribution of *Candida* sp. responsible for candidiasis in the ZAH, based on types of clinical specimens, wards, gender, and age of the patients as well as to evaluate the susceptibility of

the fungal pathogens to prevent and control the fungal infections in the hospital.

METHODS

Clinical specimen collection and preparation

The fungal pathogens were isolated from the sixty-eight clinical samples of inpatients and outpatients patients at the ZAH Banda Aceh, Indonesia during the period of January to June 2019. The clinical samples consisted of blood (n = 11), urines (n = 37), sputum (n = 11), pus (n = 5), ascites fluids (n = 1), and swabs of ear (n = 2) and vagina (n = 1). All the samples were recorded for the types of clinical samples, ages, sexes, and types of ward. Blood samples, particularly, were initially transferred and pre-incubated at 37 °C before in culture flasks of BacT/ALERT® 3D (BacT/ALERT® FA Plus) prior further isolation using culture media.

Microscopic observation and antifungal susceptibility assays

All clinical samples were inoculated to plates containing culture media of blood agar (Merck, Germany) and MacConkey agar (Merck, Germany) using inoculation loop of 1 µL for urine samples and 10 µL for other than urine samples. The plates were then incubated for 24 hours at 37 °C before they were Gram-stained and macroscopically and microscopically observed for morphological features. Moreover,

additional identification as well as antibiotic resistance profiles, were generated using VITEK® 2 Compact (Biomeriux, Lyon, France). A pure *Candida* colony recovered from the clinical samples was suspended in NaCl 0.45% equivalent to 1.8-2.2 McFarland Standard solution before the suspension was inoculated into cassettes of YST (yeast) and AST (antimicrobial susceptibility testing) for identification and antifungal susceptibility, respectively.

Data analysis

The species distribution of *Candida* sp. was descriptively analyzed based on types of clinical specimens, wards, gender, and age of the patients. The research has been approved for ethical clearance from the Ethical Clearance Committee for Health Research, Faculty of Medicine, Universitas Syiah Kuala with registration number 70/EA/FK-RSUDZA/2019.

RESULTS AND DISCUSSION

A total of 68 *Candida* sp. isolates were recovered during the study. The isolates were able to grow on the blood but unable to grow on MacConkey agar as the initial characteristics of yeast cells. The isolates on the agar showed morphological features of small, round, raised, and creamy colonies (Figure 1a). Based on microscopic observation, the yeast had positive gram staining with rice-like shaped cells, i.e. as yeast form (Figure 1b), or filamentous form (Figure 1c).

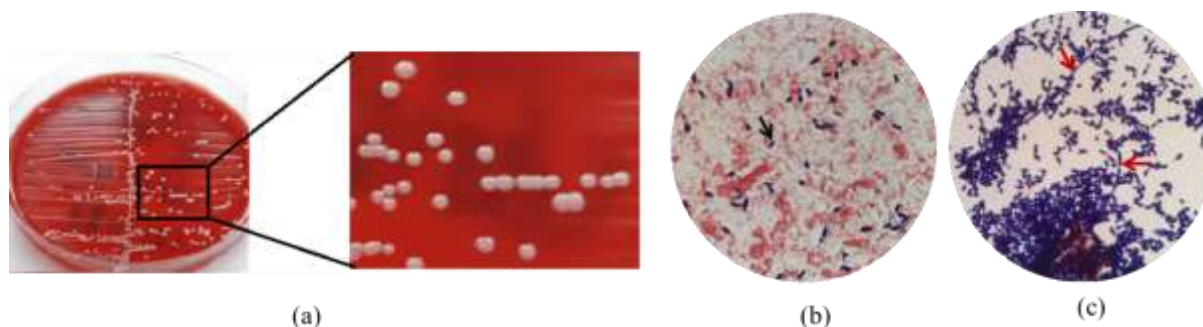


Figure 1. The morphological features of *Candida* sp. recovered from clinical specimens at the Zainoel Abidin hospital in Banda Aceh, Indonesia (a) colonies grown on the blood agar; (b) positive gram staining with rice-like shaped cells (black arrow) from direct observation of sputum with 1,000X magnification, and (c) morphological form of the fungal pathogen as yeast cells and filaments or pseudohyphae (red arrows) with 1,000X magnification.

Despite the fact that *Candida* sp is parts of human microflora mainly residing in the gastrointestinal and urinary tracts as well as skins, the fungi can switch from a harmless commensal to pathogens by expressing a set of virulence factors leading to candidiasis depending on the host immune status (Calderone & Fonzi, 2001). The switching might be indicated by changing the formation from unicellular yeast cells to filamentous hyphal form (Singh et al., 2015). In this research, the occurrence of *Candida* infections was

observed by both culturing and direct microscopy approaches. Figure 1 shows the typical morphological characteristics of *Candida* sp. isolates growing on blood agar with small round creamy colonies and appeared as dark blue after Gram-staining (Byadara-hally Raju & Rajappa, 2011). Also, Figure 1c shows the pseudohyphae form of the *Candida* sp. during the study which is commonly formed at specific environmental conditions subsequently affecting a delay

in both cell-cycle progression and extension of the apical growth period (Bravo Ruiz et al., 2020).

Table 1 shows that *Candida tropicalis* and *Candida albicans* were the two most dominant species responsible for 52.94 % and 30.88% of candidiasis, respectively, detected in the clinical specimens of the ZAH. The other species found in this research were

C. famata, *C. lucitaniae*, *C. ciferrii*, and *C. rugosa*. Based on the types of wards or patient care units, candidiasis predominantly occurred in the patients from internal medicine wards accounting for more than half of the infections during the study (Table 1) with all five *Candida* sp. were found in the clinical samples collected from the unit.

Table 1. Species distribution of *Candida* sp. responsible for candidiasis relative to the types of hospital wards during a period of January-June 2019 in the Zainoel Abidin Hospital, Banda Aceh, Indonesia

Type of wards	<i>Candida</i> species						Total per wards
	<i>C. tropicalis</i>	<i>C. albicans</i>	<i>C. famata</i>	<i>C. lucitaniae</i>	<i>C. ciferrii</i>	<i>C. rugosa</i>	
Intensive care unit	12 (17.65%)	3 (4.41%)	-	-	-	-	15 (22.06%)
Internal medicine unit	16 (23.53%)	14(20.59%)	3 (4.41%)	2 (2.94%)	1 (1.47%)	1(1.47%)	37 (54.41%)
Surgical unit	4 (5.88%)	3 (4.41%)	3 (4.41%)	-	1 (1.47%)	-	11 (16.18%)
Neurological unit	3 (4.41%)	-	-	-	-	-	3 (4.41%)
Outpatient unit	1(1.47%)	1 (1.47%)	-	-	-	-	2 (2.94%)
Total per species	36 (52.94%)	21 (30.88%)	6 (8.82%)	2 (2.94%)	2 (2.94%)	1 (1.47%)	68 (100%)

The most prevalence of Candidiasis in this study occurred in the internal medicine unit accounting for 54.41% (Table 1). This might be due to the utilization of catheters or other prosthetic devices in addition to the intrinsic factors of the patients. The previous study signified that *Candida* sp. had ability to form biofilm in the invasive medical devices, including catheters allowing the fungal pathogen to adhere and reside resulting in increasing high mortality rate (Nett, 2016; Tsui et al., 2016; Vitális et al., 2020). In the form of biofilm, the fungal pathogen might resist the host immune response and express some virulent factors which differ from the properties of the planktonic forms (Bouza et al., 2015). Other researchers found that *C. tropicalis* was determined to have highest biofilm formation ability compared to other high biofilm-forming *Candida* isolates, such as *C. parapsilosis*, *C. glabrata*, and *C. orthopsilosis* (Sahal & Bilkay, 2018).

In terms of gender, candidiasis was more prevalent in men than in women (Table 2). This might be associated with the fact that during January-June 2019, there were more clinical specimens from men patients than women accounting for 53.95% and 46.05%, respectively, from the total 3.168 patients (data not shown). Other investigators argued that the occurrence of candidiasis between men and women is equal since *Candida* sp. reside as normal flora in both men and women as demonstrated in their research in Korea (Kim et al., 2016; Shin et al., 2010).

Among age groups, it is found that in the present study candidiasis prevalently occurred during adulthood (55.88%) (Table 3) of the total infections during

the study. Candidiasis was prevalent in patients age 19-59 years and patients age ≥ 60 accounting for 55.88% and 41.18%, respectively. Teenagers age of 13-18 years, however, had no candidiasis detected in their clinical specimens during the period of study. These findings are also supported by previous research (Kim et al., 2016) indicating that the infection rate of candidiasis tends to increase with increasing age. It is argued that this might be related to immune status since there is a progressive decline of the total lymphocyte and absolute number of T and B cells among age groups from infants to adults (Valiathan et al., 2016).

Moreover, in terms of types of clinical specimens, Table 4 shows that most of candidiasis occurred in the urine samples accounting more than half of candidiasis occurrence during a period of study. Of 37 urine samples, *Candida tropicalis* and *Candida albicans* was predominantly found in 17 (46%) and 12 (32%) samples, respectively. This result is in alignment with the previous study signifying the presence of *Candida* sp. in urine, blood, and sputum from the university hospital in Korea that were disseminated through nosocomial infections mediated by intensive use of catheter and improper use of antimicrobial therapy (Kim et al., 2016). Furthermore, some predisposing factors, including diabetes mellitus, are more likely to trigger the *Candida* sp. to switch from commensal to pathogenic forms due to the increasing blood sugar level in urine and blood along with decreasing host immune (Esmailzadeh et al., 2018; Wantini & Rani, 2017).

Table 2. Species distribution of *Candida* sp. responsible for candidiasis based on gender during a period of January-June 2019 in the Zainoel Abidin Hospital, Banda Aceh, Indonesia

Sexes	<i>Candida</i> species						Total per sexes
	<i>C. tropicalis</i>	<i>C. albicans</i>	<i>C. famata</i>	<i>C. lucitaniae</i>	<i>C. ciferrii</i>	<i>C. rugosa</i>	
Females	14(20.59%)	11(16.18%)	2(2.94%)	1(1.47%)	-	-	28 (41.18%)
Males	22(32.35%)	10(14.71%)	4(5.88%)	1(1.47%)	2(2.94%)	1(1.47%)	40 (58.82%)
Total	36 (52.94%)	21 (30.88%)	6 (8.82%)	2 (2.94%)	2 (2.94%)	1 (1.47%)	68 (100%)

Table 3. Species distribution of *Candida* sp. responsible for candidiasis based on age groups during a period of January-June 2019 in the Zainoel Abidin Hospital, Banda Aceh, Indonesia

Age groups (years)	<i>Candida</i> species						Total per age group
	<i>C. tropicalis</i>	<i>C. albicans</i>	<i>C. famata</i>	<i>C. lucitaniae</i>	<i>C. ciferrii</i>	<i>C. rugosa</i>	
0-12	1(1.47%)	-	-	-	1 (1.47%)	-	2(2.94%)
13-18	-	-	-	-	-	-	-
19-59	18 (26.47%)	13 (19.12%)	5(7.35%)	1(1.47%)	1 (1.47%)	-	38(55.88%)
≥60	17(25.00%)	8 (11.76%)	1(1.47%)	1(1.47%)	-	1(1.47%)	28(41.18%)
Total per species	36 (52.94%)	21 (30.88%)	6 (8.82%)	2 (2.94%)	2 (2.94%)	1 (1.47%)	68 (100%)

Table 4. Species distribution of *Candida* sp. responsible for candidiasis relative to the types of clinical specimens during a period of January-June 2019 in the Zainoel Abidin hospital, Banda Aceh, Indonesia

Clinical specimens	<i>Candida</i> species						Total per specimens
	<i>C. tropicalis</i>	<i>C. albicans</i>	<i>C. famata</i>	<i>C. lucitaniae</i>	<i>C. ciferrii</i>	<i>C. rugosa</i>	
Urine	17 (25%)	12 (17.65%)	4 (5.88%)	2 (2.94%)	1 (1.47%)	1 (1.47%)	37(54.41%)
Blood	7 (10.29%)	3 (4.41%)	1 (1.47%)	-	-	-	11(16.18%)
Sputum	7 (10.29%)	3 (4.41%)	1 (1.47%)	-	-	-	11(16.18%)
Pus	3 (4.41%)	2 (2.94%)	-	-	-	-	5 (7.35%)
Ear Swabs	1 (1.47%)	-	-	-	1 (1.47%)	-	2 (2.94%)
Ascites fluids	1 (1.47%)	-	-	-	-	-	1 (1.47%)
Vaginal swabs	-	1 (1.47%)	-	-	-	-	1 (1.47%)
Total per species	36 (52.94%)	21 (30.88%)	6 (8.82%)	2 (2.94%)	2 (2.94%)	1 (1.47%)	68 (100%)

Table 5. Antifungal sensitivity (%) of *Candida* sp. responsible for candidiasis isolated from clinical specimens during a period of January-June 2019 in the Zainoel Abidin Hospital, Banda Aceh, Indonesia

Species	(n)	Percentage of Antifungals Sensitivity (MIC in µg/mL)					
		FCZ	VRC	CPF	MCF	ApB	FY
<i>Candida tropicalis</i>	36	100 (0.74)	100 (0.12)	100 (0.12)	100 (0.07)	97 (0.39)	100 (1.2)
<i>Candida albicans</i>	21	100 (0.5)	100 (0.12)	100 (0.12)	100 (0.06)	100 (0.54)	100 (1.00)
<i>Candida famata</i>	6	100 (n/a)	100 (n/a)	100 (n/a)	100 (n/a)	100 (n/a)	100 (n/a)
<i>Candida lucitaniae</i>	2	100 (n/a)	100 (0.12)	100 (n/a)	100 (n/a)	100 (0.5)	100 (n/a)
<i>Candida ciferrii</i>	2	100 (n/a)	100 (n/a)	100 (n/a)	100 (n/a)	100 (n/a)	100 (n/a)
<i>Candida rugosa</i>	1	100 (n/a)	100 (0.12)	100 (n/a)	100 (n/a)	100 (n/a)	100 (1.00)

Note: FCZ (Fluconazole); MCF (Micafungin); VRC (Voriconazole); ApB (Amphotericin B); CPF (Caspofungin); FY (Flucytosine); n/a: data not available

In terms of antimicrobial susceptibility, the assay test showed that the sensitivity of the fungal pathogens across the *Candida* species against the antifungals (fluconazole, voriconazole, caspofungin, micafungin, amphotericin B, and flucytosine) was still high, i.e., more than 97%, meaning that the antifungals were still effective to treat the fungal infections (Table 5). In this study, *C. tropicalis* and *C. albicans* were the two-most predominant *Candida* sp. found in the clinical specimens. This result is quite different from previous studies stating that *C. albicans* was the most prevalent species followed by *C. tropicalis* in Korea (Kim et al., 2016). This difference might be

due to the variations of seasons, locations, as well as environmental settings (Kim et al., 2016). Other investigators (Zarrin & Mahmoudabadi, 2009) argued that the increasing occurrence of non-albicans *Candida*, such as *C. tropicalis*, is due to the increasing administration of fluconazole which is potent to *C. albicans* but not to non-albicans. Additionally, in this study, the MIC values of *C. tropicalis* (0.74 µg/mL) was higher than *C. albicans* (0.5 µg/mL) (Table 5) leading to the elimination of the *C. albicans* was more likely to occur whereas *C. tropicalis* survived and remained colonializing during the empirical therapy

of fluconazole explaining the more prevalence of *C. tropicalis*.

To monitor and evaluate the efficacy of antifungal administration for candidal infections, it is essential to assay the existing antifungals to determine the Candidal resistance during a period of time. In the antifungal susceptibility tests, the sensitivity percentage of *Candida* sp in this study was higher indicating that the fungal pathogens are still susceptible to the current antifungals, i.e. fluconazole, voriconazole, caspofungin, micafungin, amphotericin B, and flucytosine. This finding is corroborated with previous study demonstrating that *Candida* sp. was still susceptible to fluconazole (Reza et al., 2017). In the ZAH, fluconazole is still the primary prescribed drug to treat candidiasis. Although *C. tropicalis* found as the most prevalent in the present study remained susceptible, however, other research reported the increasing trend of resistance of the fungal pathogen due to the expression a various virulent factors (Zuza-Alves et al., 2017) and robust biofilm-mediated infection (Sahal & Bilkay, 2018).

This is the first work to elucidate the spread and the antifungal sensitivity of *Candida* sp responsible for candidiasis in the ZAH based on the types of patients' clinical specimens, gender and age. This study is essential to provide benefits in taking infection prevention and control policies as well as in providing empirical antifungals to overcome Candida-related infections in clinical and communal settings.

CONCLUSION

Candidiasis cases in ZAH Banda Aceh were prevalently caused by *Candida tropicalis* with the highest occurrence from urine specimens, of inpatients in the internal medicine unit, men with age group of 19-59 years or older. Additionally, although the current antifungal therapy in the ZAH for candidiasis is considered still effective empirically and definitively, the surveillance of the fungal pathogens, especially *Candida tropicalis*, is still highly required to be monitored and implemented.

ACKNOWLEDGEMENTS

Authors acknowledged the Laboratory of Clinical Microbiology Installation of Integrated Clinical Laboratory of dr. Zainoel Abidin Hospital Banda Aceh, Indonesia for providing facilities during the study. Additionally, the Internship scientific publication program of FMIPA, Universitas Syiah Kuala was acknowledged for the composition of the paper.

REFERENCES

- Berkow, E. L., & Lockhart, S. R. (2017). Fluconazole resistance in *Candida* species: a current perspective. *Infection and drug resistance*, 10, 237-245.
- Bouza, E., Guinea, J., & Guembe, M. (2015). The role of antifungals against candida biofilm in catheter-related candidemia. *Antibiotics*, 4(1), 1-17.
- Bravo Ruiz, G., Ross, Z. K., Gow, N. A. R., & Lorenz, A. (2020). Pseudohyphal growth of the emerging pathogen *Candida auris* is triggered by genotoxic stress through the S phase checkpoint. *mSphere*, 5(2), e00151-00120.
- Byadarahally Raju, S., & Rajappa, S. (2011). Isolation and identification of *Candida* from the oral cavity. *ISRN dentistry*, 2011.
- Calderone, R. A., & Fonzi, W. A. (2001). Virulence factors of *Candida albicans*. *Trends in Microbiology*, 9(7), 327-335.
- Deorukhkar, S., & Roushani, S. (2017). Fluconazole resistance in *Candida* Species: Ten year's experience at a rural tertiary care teaching hospital in India. *Journal of Infectious Diseases and Pathogenesis*, 1, 102.
- Esmailzadeh, A., Zarrinfar, H., Fata, A., & Sen, T. (2018). High prevalence of Candiduria due to non-albicans *Candida* Species among diabetic patients: A matter of concern? *Journal of Clinical Laboratory Analysis*, 32(4), e22343.
- Frías-De-León, M. G., Martínez-Herrera, E., Acosta-Altamirano, G., Arenas, R., & Rodríguez-Cerdeira, C. (2019). Superficial candidosis by *Candida duobushaemulonii*: An emerging microorganism. *Infection, Genetics and Evolution*, 75, 103960. doi:https://doi.org/10.1016/j.meegid.2019.103960.
- Karasuno, T., Sata, H., Noda, Y., Imakita, M., & Yasumi, M. (2019). Invasive candidiasis leading to gastric perforation in an immunocompromised patient. *IDCases*, 18, e00627.
- Kim, G.-Y., Jeon, J.-S., & Kim, J. K. (2016). Isolation frequency characteristics of *Candida* species from clinical specimens. *Mycobiology*, 44(2), 99-104.
- Martins, N., Ferreira, I. C. F. R., Barros, L., Silva, S., & Henriques, M. (2014). Candidiasis: Predisposing factors, prevention, diagnosis and alternative treatment. *Mycopathologia*, 177(5), 223-240.
- Mavor, A. L., Thewes, S., & Hube, B. (2005). Systemic fungal infections caused by *Candida* Species: Epidemiology, infection process and virulence attributes. *Current Drug Targets*, 6(8), 863-874.
- Nett, J. E. (2016). The host's reply to *Candida* biofilm. *Pathogens*, 5(1), 33.

- Reza, N. R., Tantari, S., & Basuki, S. (2017). In vitro susceptibility test of fluconazole to *Candida* spp in patients with oropharyngeal candidiasis and HIV/AIDS with Vitek II. *Berkala Ilmu Kesehatan Kulit dan Kelamin*, 29(3), 234-242.
- Sahal, G., & Bilkay, I. S. (2018). Distribution of clinical isolates of *Candida* spp. and antifungal susceptibility of high biofilm-forming *Candida* Isolates. *Revista da Sociedade Brasileira de Medicina Tropical*, 51, 644-650.
- Sanguinetti, M., Posteraro, B., & Lass-Flörl, C. (2015). Antifungal drug resistance among *Candida* species: Mechanisms and clinical impact. *Mycoses*, 58(S2), 2-13.
- Shin, H.-S., Park, Y.-B., & Shin, D.-S. (2010). Isolation frequency of *Candida* species from clinical specimens. *The Korean Journal of Mycology*, 38(2), 146-151.
- Singh, S., Fatima, Z., & Hameed, S. (2015). Predisposing factors endorsing *Candida* Infections. *Le infezioni in medicina: rivista periodica di eziologia, epidemiologia, diagnostica, clinica e terapia delle patologie infettive*, 23(3), 211-223.
- Sorgo, A. G., Heilmann, C. J., Dekker, H. L., Bekker, M., Brul, S., de Koster, C. G., Klis, F. M. (2011). Effects of fluconazole on the secretome, the wall proteome, and wall integrity of the clinical fungus *Candida albicans*. *Eukaryotic Cell*, 10(8), 1071-1081.
- Tsui, C., Kong, E. F., & Jabra-Rizk, M. A. (2016). Pathogenesis of *Candida albicans* biofilm. *Pathogens and Disease*, 74(4).
- Valiathan, R., Ashman, M., & Asthana, D. (2016). Effects of ageing on the immune system: Infants to Elderly. *Scandinavian Journal of Immunology*, 83(4), 255-266.
- Vitális, E., Nagy, F., Tóth, Z., Forgács, L., Bozó, A., Kardos, G., Kovács, R. (2020). *Candida* biofilm production is associated with higher mortality in patients with candidaemia. *Mycoses*, 63(4), 352-360.
- Wantini, S., & Rani, T. S. (2017). Gambaran Jamur *Candida albicans* dalam urine penderita diabetes mellitus di RSUD Jendral Hamad Yani, Kota Metro. 2017, 5(2), 5.
- Zarrin, M., & Mahmoudabadi, A. Z. (2009). Invasive Candidiasis; a review article. *Jundishapur Journal of Microbiology*, 2(1), 1.
- Zuza-Alves, D. L., Silva-Rocha, W. P., & Chaves, G. M. (2017). An update on *Candida tropicalis* based on basic and clinical approaches. *Frontiers in Microbiology*, 8(1927).